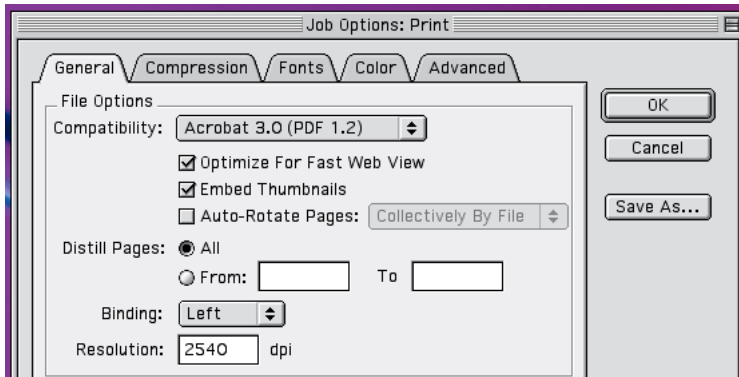


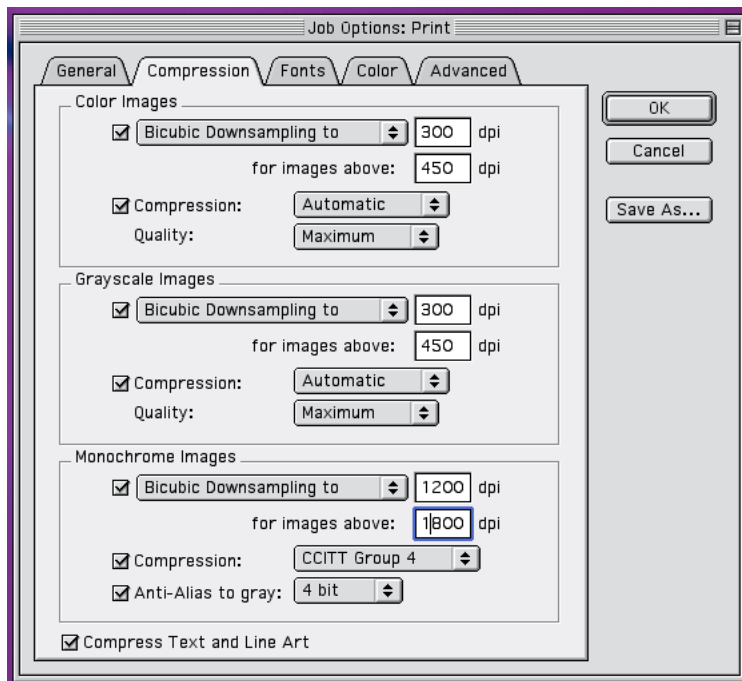
Acrobat Distiller 5 Settings for creating PDFs to submit to Lowe's Printing

With the Acrobat Distiller window open select "Settings" on the top menu bar.

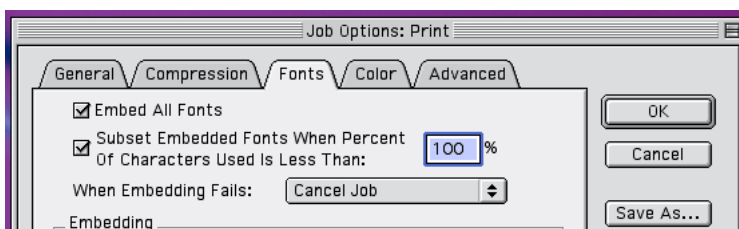
Then select "Job Options".



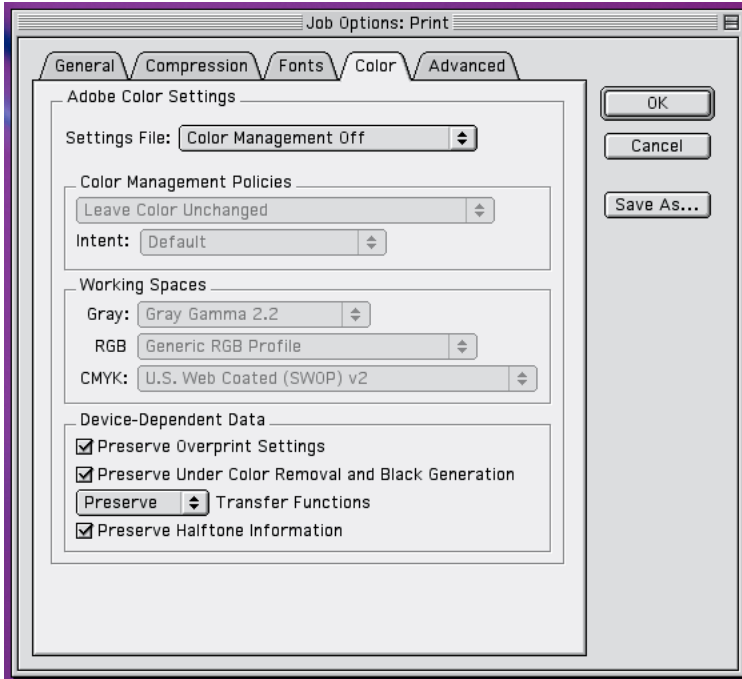
In the General Tab:
Compatibility: Acrobat 3.0 (PDF 1.2)
Check Optimize ... & Embed Thumbnails
Resolution is 2540 dpi



In the Compression Tab:
Color Images:
Bicubic Downsampling: 300 dpi for images above 450 dpi
Compression: Automatic, Maximum
Grayscale Images:
Bicubic Downsampling: 300 dpi for images above 450 dpi
Compression: Automatic, Maximum
Monochrome Images:
Bicubic Downsampling: 1200 dpi for images above 1800 dpi
Compression: CCITT Group 4, 4 bit
Check Compress Text and Line Art



In the Fonts Tab:
Check Embed all Fonts
When Embedding Fails: Cancel Job



In the Color Tab:

Settings File: Color Management Off

Color Management Policies:

Leave Color Unchanged

Intent: Default

Working Spaces:

Gray: Gray Gamma 2.2

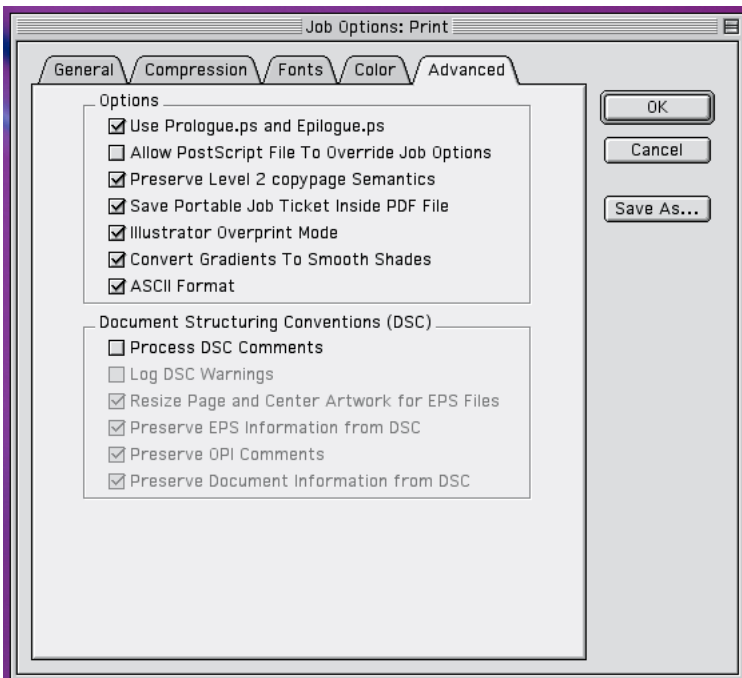
RGB: Adobe RGB (1998)

CMYK: U.S. Web Coated (SWOP) v2

Device-Dependent Data:

All options checked

Preserve Transfer Functions



In the Advanced Tab:

Options:

All checked EXCEPT

“Allow PostScript File to
Override Job Options”

Document Structuring Conventions (DSC):

All Checked EXCEPT

“Process DSC Comments” and
“Log DSC Warnings”